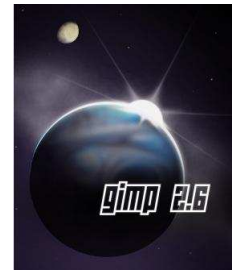


# A Beginner's Tutorial for The GIMP

GNU Image Manipulation Program (version 2.6)

Graham Rich - July 17, 2009



## ***Intentions***

The following is intended to be a hands-on tutorial / assignment for a student who has never used the GIMP before. At the conclusion of this tutorial, your “before” and “after” products should look like this:



## ***Assumptions***

This tutorial assumes that students know basic functions, such as paint brushes and erasers. Those will not be covered here.

---

## ***Start Here***

Let's begin by making sure that you've opened the GIMP 2. (I'm using 2.6.)

Choose the link that looks like this rat with a paint brush in its mouth.

If you need to install the GIMP, you can download it for free from <http://gimp.org>

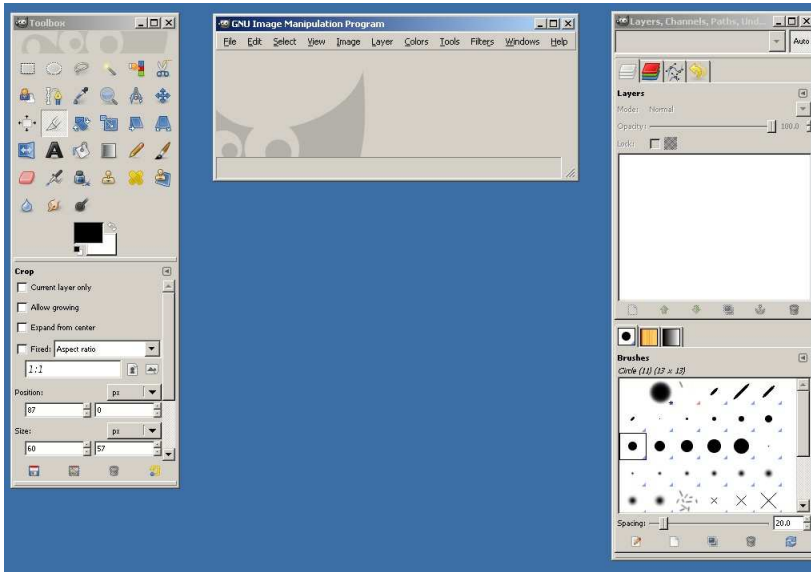


If you need to download the latest version of the GIMP, be sure to do the following so that your GIMP works in expected ways.

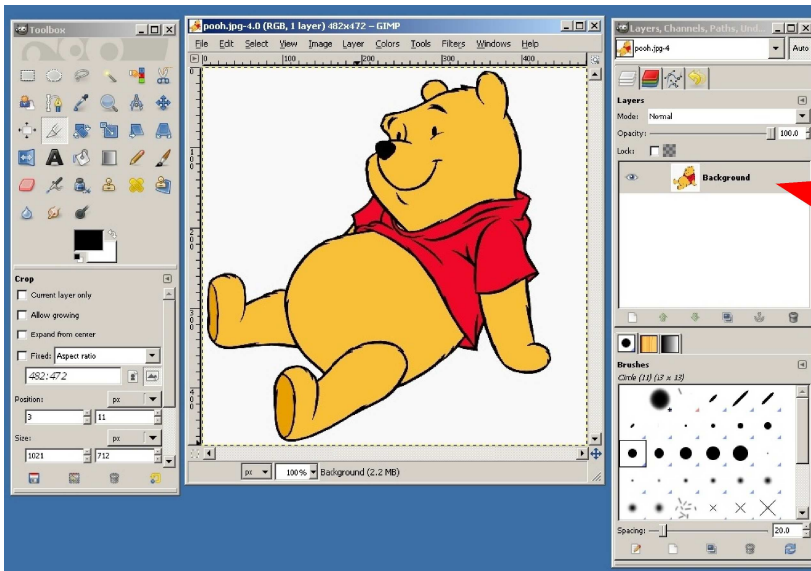
1. Open the GIMP 2.6
2. In the “GNU Image Manipulation Program” window, choose **Edit --> Preferences**
3. Scroll down the list to “**Window Management**”
4. Ensure that all dropdown options state “**Normal Window**”  
(This will allow the focus window to appear on top, no matter what.)

## Setting Up the Workspace

On opening the GIMP, make sure to organize your screen like this (version 2.6).  
(Beware, as versions below 2.6 have only two main windows.)



Go ahead and open a file you've saved from your own work, or that you've found on the Internet. I recommend saving the file to a safe place (e.g. "H:\\" drive, if you're at school) before opening here. You should now see something like this.



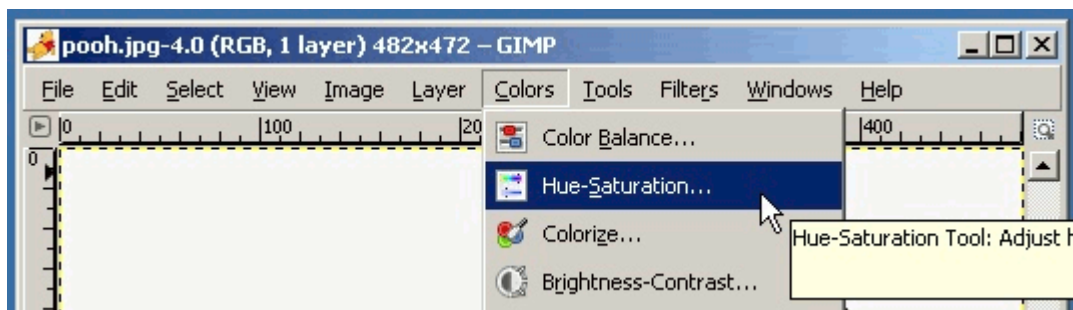
There's only one layer so far.

Think of a layer like a sheet of paper or transparency where you can write.

Layers are stacked, so to move a layer up or down, just drag it.

## Changing Colours

Let's choose the easiest way to change a picture's colors.  
Select "Colors" --> "Hue-Saturation"

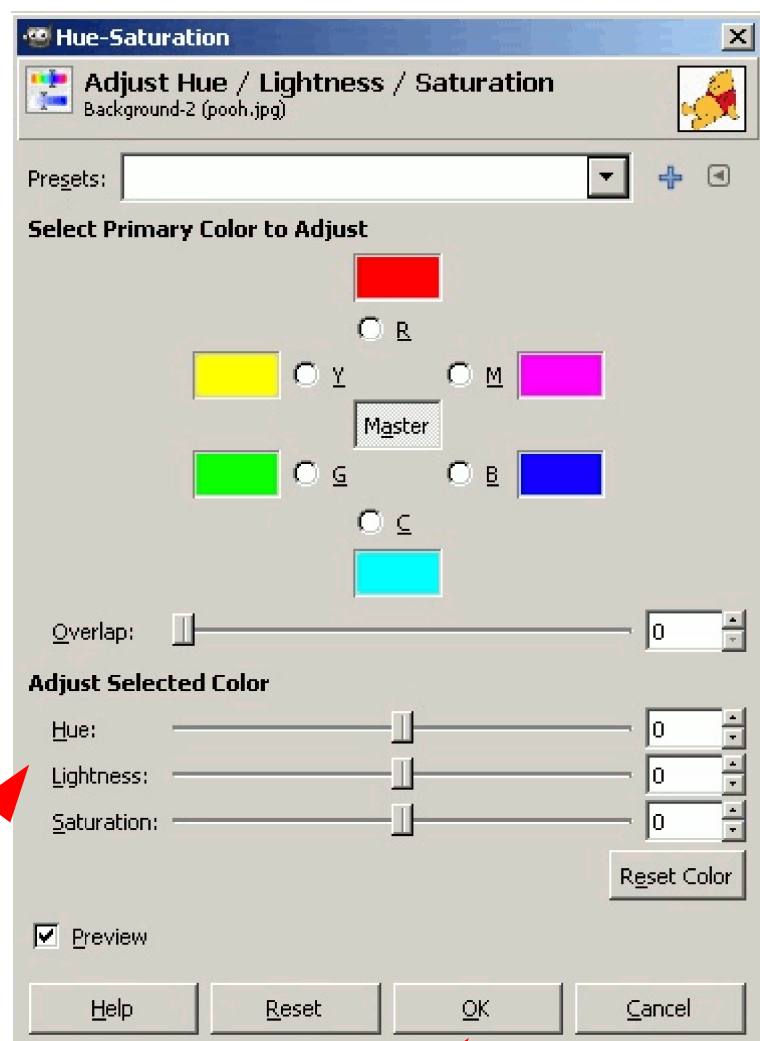


Next, a pop-up window will appear.

Now, leave the "Master" button clicked, but adjust the sliders and see what difference each one makes.

*Leave "Preview" checked, as this will show your work-in-progress.*

*Remember to click "OK" to save the changes!*



Mine looks like this now:



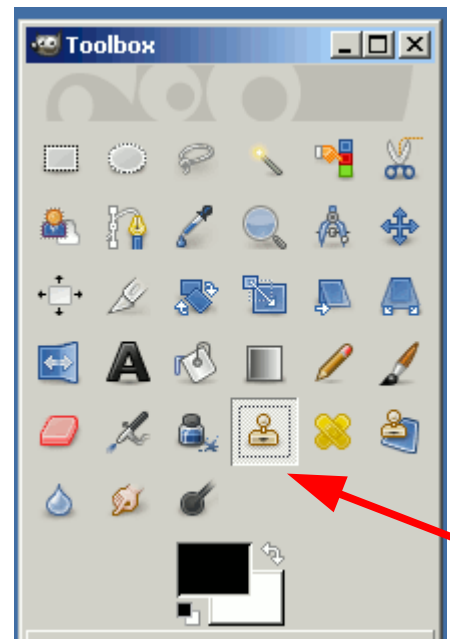
## Cloning

Your picture is now *begging* to be altered. The “**stamp**” tool is the best one for the job. This is the tool to use to remove power lines, weeds, or ugly relatives from photos. When you master this tool, you'll be able to “Photoshop” yourself into any situation.

*It takes at least 2 steps to get a good clone effect.*

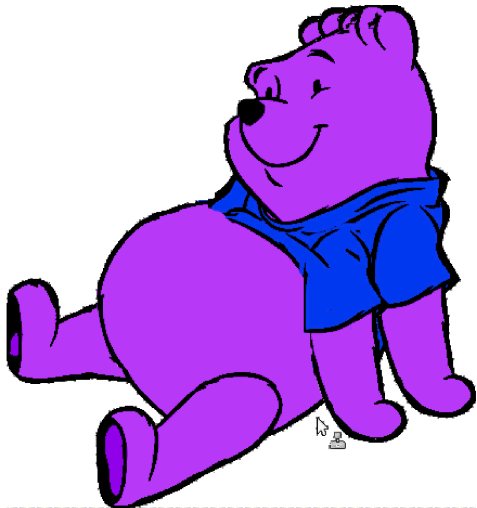
### Cloning Rules

1. Hold down the “**Ctrl**” key.  
**Click ONCE** in the center of your source location.
2. Now you're ready to clone (or “paste”)  
Go to your destination location and **CLICK & DRAG** in small circles.



### Warnings

- Every time you release the left mouse button, your clone has stopped, and a new one will begin *from the original source location*!
- If you intend to *undo* a cloning, then it will *undo one entire dragging motion*, not each little section. Therefore, you may wish to start small, and always start your clone drag from the same exact location.



To **SAVE** your work, click “File” --> “Save” (or “Save As”). If you type an ending (like “.jpg” or “.gif”) then it will save this way.

If you want to work on this image later (and keep all the layers), then save as “**.xcf**”.  
This is the GIMP's 'native' format.

Otherwise, if you don't know a file type, the choices are under “Select File Extension” near the bottom left corner.

*And that's all there is!*

*Let me know if this tutorial was helpful.  
Email me at [richg@staff.ednet.ns.ca](mailto:richg@staff.ednet.ns.ca)*